



SAINT CHARLES TROLLEY

Making the loop from
March 15 to December 31

Monday to Saturday
11:30am to 9:30pm

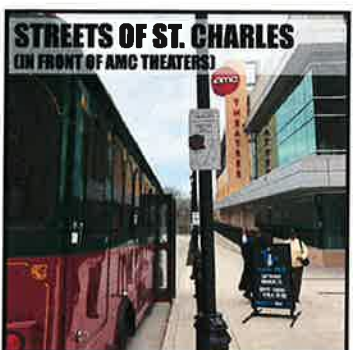
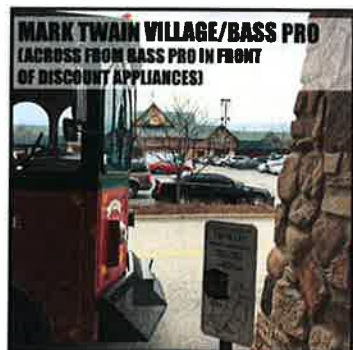
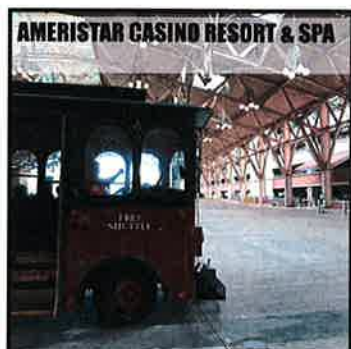
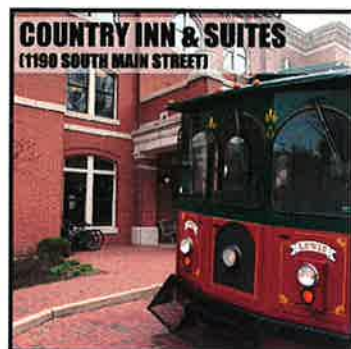
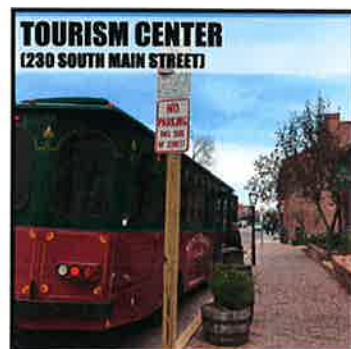
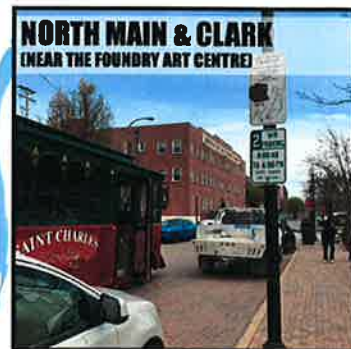
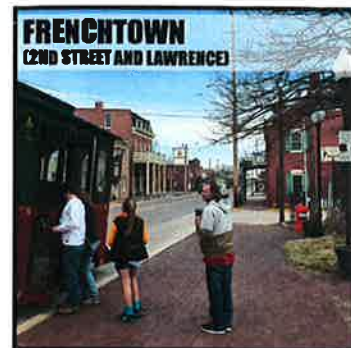
Sundays
11:30am to 7:30pm

The Saint Charles Trolley starts at the St. Charles Convention Center at 11:30am, the loop takes approximately :30 minutes.

Hop on board and Discover Saint Charles!

* The Saint Charles Trolley has a lift to provide access for riders using wheelchairs, scooters, crutches, walkers or other mobility aids. Wheelchairs and scooters are required to be 100% secured using fastening straps located in the wheelchair area.

*For the comfort of riders, no pets are allowed. Service animals only.



Missouri River

The Trolley is a
FREE service!